

PATsPlus Utility for downloading Seaward PrimeTest 300/350, IT1000, Supernova/Europa

This utility will allow users to download test data in ASCII format, from the PrimeTest 300 and 350, they then have the choice of automatically opening the data in SimplyPats or saving the file in Excell format.

The User must set the download format in the PAT to **ASCII** when downloading **not** PATs +

Downloading in ASCII format rather than SSS format has some drawbacks, these are;

Test Limits are not downloaded (don't confuse this with the Test Results, these are downloaded)

The Location and Test Period (Retest Period) are not downloaded, however these can be entered in one of the 4 comments fields after the test, in which case they can be downloaded providing they are setup in the utility.

To explain further, the user can enter the following information into the PrimeTest (350 in this case) before the test is carried out, this table shows what can be downloaded into SimplyPats.

Field on PAT (Prior to Test)	Downloaded to SimplyPats?
USER	YES
ASSET ID (Appliance ID)	YES
SITE	YES
LOCATION	NO (Enter in comments field if needed)
TEST PERIOD (Retest Period)	NO (Enter in comments field if needed)

After the test is completed, the user has 4 Comments Fields to enter information, on the PAT they look like this;

- APP DESC
- NOTES
- NOTES
- NOTES

Obviously the 1st field would normally be used for the Appliance Description or Appliance Description Abbreviation if the user is using this feature of SimplyPats.

NOTES Fields 2, 3 and 4 can be used for the following, however the user must stipulate in the PATsPlus utility what they have used the fields for before downloading.

- IGNORE
- APPLIANCE DESCRIPTION
- SITE
- LOCATION
- FAIL REASON
- RETEST PERIOD
- NOTES
- CHARGE / REPAIR CODE

Looking at the above, the user would probably want to enter the following;

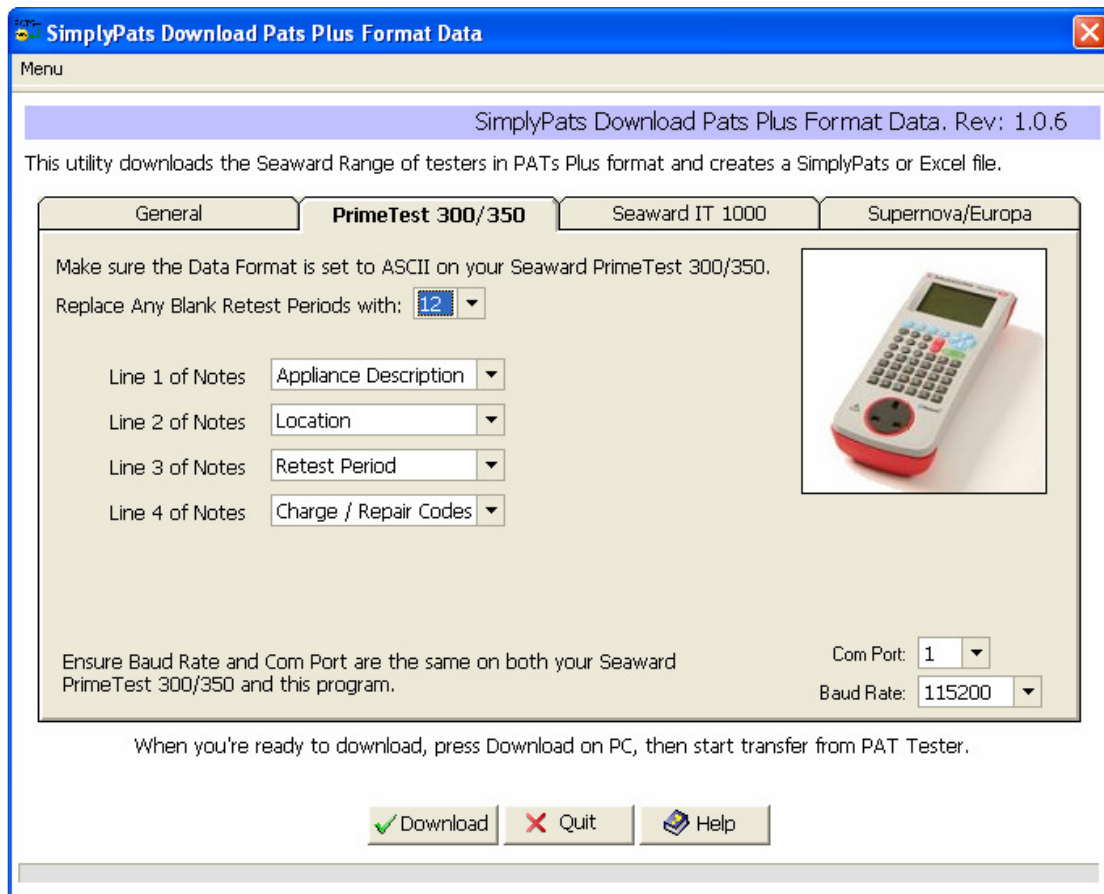
- APPLIANCE DESCRIPTION
- LOCATION
- RETEST PERIOD

In the first 3 fields, while using the 4th field for;

- FAIL REASON or CHARGE / REPAIR CODE

The User also has the ability to Replace any Blank Retest Periods with a Value set in the utility.

See image below for more information.



This covers almost everything the user would need.